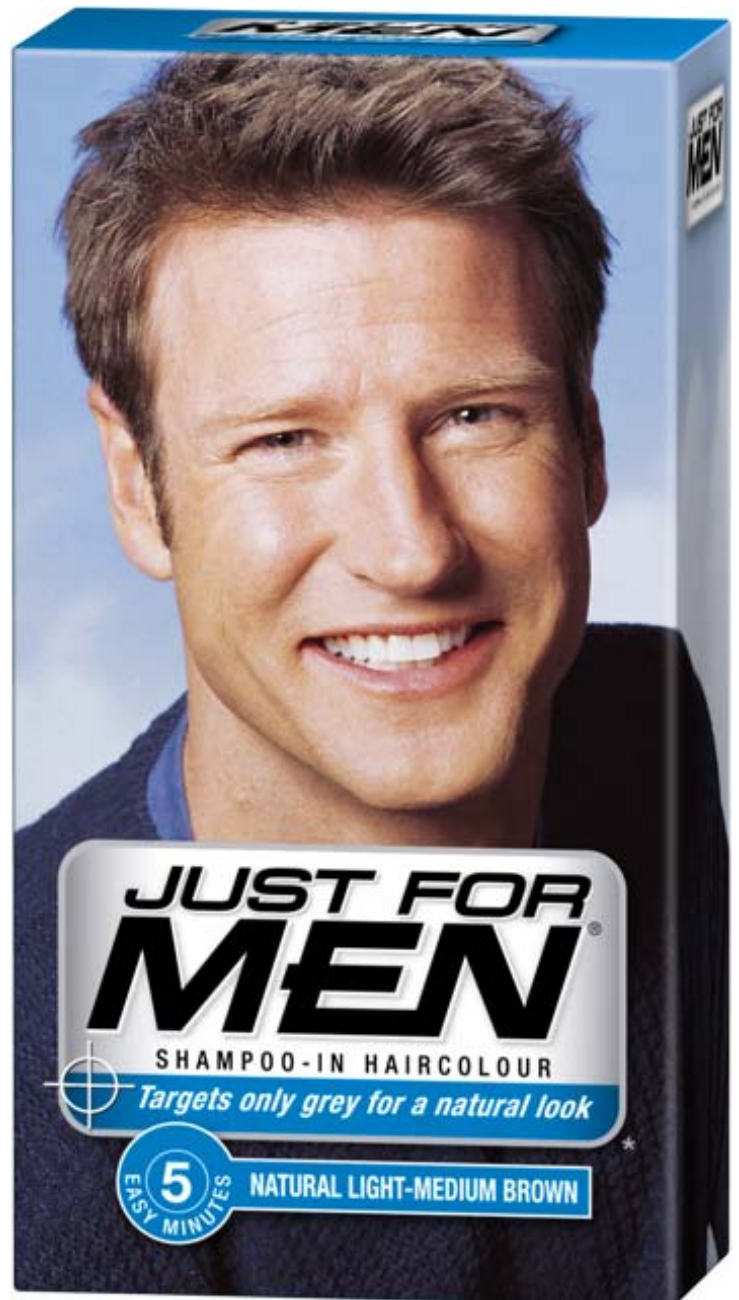


MY SHADE IS:

NEW SHADE

LIGHT-MEDIUM BROWN

- *Targets only the grey. Replaces it with subtle tones for a natural look in 5 minutes.*
- *Easy as shampooing.*
- *Lasts up to 6 weeks, until the grey grows back.*
- *From the world's leader in men's hair-colour.*



Available at... Independent pharmacies.